

# GN 191 | T-shaped connecting clamps

Aluminium



- 1
- 2
- 3
- 4
- 5
- 6
- 7
- 8
- 9
- 10
- 11
- 12
- 13
- 14
- 15
- 16
- 17
- 18

## MATERIAL

Aluminium, matte finish.  
AISI 304 stainless steel screws and nuts.

## STANDARD EXECUTIONS

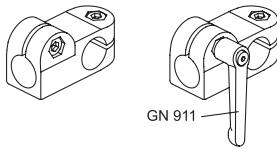
Surface finish index:  
- **BL**: natural colour.  
- **SW**: epoxy resin coating resistant to UV rays, RAL 9005 black colour.

## FEATURES AND APPLICATIONS

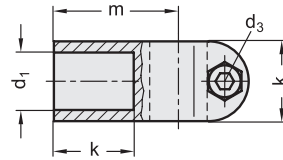
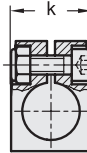
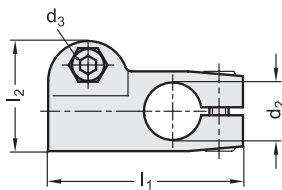
The assembly hole of GN 191 connecting clamps allows an excellent match with tubes GN 990 (see page 1368).  
The clamping screw d3 may be replaced by clamping kit GN 911 (see page 1372).

## SPECIAL EXECUTIONS ON REQUEST

Different combinations of holes d1/d2.



Conversion Table	
1 mm = 0,039 inch	
d1	
mm	inch
10	0.39
12	0.47
14	0.55
15	0.59
16	0.63
18	0.71



Connecting clamps

Code BL	Code SW	Description	d1	d2	d3	k	l1	l2	m	d3 Clamping kit	⚖️
GN.52011	GN.52016	GN 191-B10-B10-2-*	10	10	M6	25	61	34.5	39	GN 911-M6-22	97
GN.52031	GN.52036	GN 191-B12-B12-2-*	12	12	M6	25	61	34.5	39	GN 911-M6-22	93
GN.52051	GN.52056	GN 191-B14-B14-2-*	14	14	M6	25	61	34.5	39	GN 911-M6-22	89
GN.52071	GN.52076	GN 191-B15-B15-2-*	15	15	M6	25	61	34.5	39	GN 911-M6-22	86
GN.52091	GN.52096	GN 191-B16-B16-2-*	16	16	M6	25	61	34.5	39	GN 911-M6-22	84
GN.52111	GN.52116	GN 191-B18-B18-2-*	18	18	M6	25	61	34.5	39	GN 911-M6-22	81

2

\* Complete the description of the standard item needed by adding the finish of the connector clamps: BL (blank) or SW (black).